

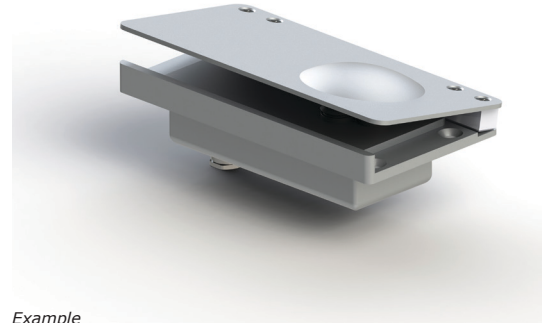
# Foot operated pedal P15



Gessmann's foot operated pedal P15 is specially designed for usage in railway applications. Their robust design which is based on the relevant standards EN-60077 and EN-50155 guarantees low life cycle costs and a maintainability over period of 35 years.

## Technical data

Ambient temperature outside vehicle	-40°C to +50°C -> EN 50 155 Class T1, T2, T3, TX
Shock and vibration	According to EN 61373
Isolation and High voltage test	According to EN 50155
Pollution degree	PD 3 according to EN 60077-1 (others on demand)
Fire and smoke	Compliant to EN 45545 (others on demand)
Mechanical endurance	10 million operating cycles
Electrical endurance	Minimum operating cycle class C3/A3 according to EN 60077-2



Example

	P15	C1	I	C01
<b>Basic Unit</b>				
P15 Foot operated pedal				
<b>Output Signal</b>				
C1 1 Contact				
C2 2 Contacts				
<b>Interface</b>				
I1 Cable with connector*				
I2 Cable without connector*				
*Customer specific length				
<b>Cable outlet</b>				
C01 Left side				
C02 Bottom side				

# Foot operated pedal P15



1

